

The Gillespie Gazette

Connecting members with the community and each other.



The Gillespie Center Annual Meeting

Thursday, January 19, 6:00 pm

Join us for a recap of 2022, learn what we're planning for 2023 and join us in acknowledging our service partners.

Everyone is welcome and appetizers will be served.

Also in this issue:

AARP Tax Assistance

New! Corn Hole Bean Bag

One-on-one technology appointments



Message from Karen DeLorenzo

Board President, The Gillespie Center

Ahh.... the New Year! We made it to 2023 and are beginning another great year at The Gillespie Center! Hoping everyone had a wonderful holiday.

I am excited to welcome two new Board Members to our Board of Directors:

Wendy Gasca

Vickie Innes

A huge thank you to our returning board members:

Linda Blakstvedt (Secretary)

Wendy Gasca

Joy Grundeen

Vickie Innes

Ann MacGregor

Pastor Mike Michalk

Susan Navratil (Past President)

Michelle Seeman (Treasurer)

I look forward to working together in this upcoming year. A huge shout out of thanks and appreciation to Susan Navratil for sharing her time and talents as the Board President the past couple years. I know I have tough shoes to fill. I am thrilled and humbled to have been elected as the new President of the Board at the Gillespie.

A couple 2023 dates to make sure that you add to your calendar:

January 19, 6:00 pm
Annual Meeting

February 5
Bingo

June 17
Rockin' the Block band and party

Wishing you a healthy and joyous 2023 and hope to meet many of you at the center soon!
~ Karen

January 1

Betty Lansing

January 2

R. Terry Dunn

Harley Kukuk

January 4

Lydija Tschumperlin

January 12

Larry Beno

Jack Weist

January 14

Larry Gallagher

January 16

Jeanne Brustad

Jan Melenich

January 18

Joel Reinitz

January 19

Jackie Davis

January 22

Veronica Geyen

MarJo Hubbell

Dennis Schroeder

January 23

Beth Bessesen

January 24

Carol Abrahamson

Don Saxon

**Happy
Birthday
to You**

ONGOING WEEKLY ACTIVITIES

Monday	Tuesday	Wednesday	Thursday	Friday
8:30 am: Over 50 & Fit 9 am: Canasta 1 pm: Cribbage	Photo Club 9:45 am: Art Group 1 pm: Needle Talking	8:30 am: Over 50 & Fit 9:30 am: Strength & Cardio 10:30 am: Yoga 1 pm: Bridge	10 am: Men's Shed 1 pm: Corn Hole Bean Bag	8:30 am: Over 50 & Fit 1 pm: 500 Cards

JANUARY EVENTS & LUNCH MENU

2	3	4	5	6
CLOSED FOR NEW YEAR'S HOLIDAY	7 pm: Beginners Square Dance	11:30 am: Lunch Potato Soup with 1/2 sandwich Dessert		
9	10	11	12	13
FIRST DAY TO MAKE AARP TAX APPOINTMENTS 7 pm: Beginners Square Dance	9:30 am - 12:30 pm: 1:1 Tech Appointments	11:30 am: Lunch Egg Foo Young with fried rice Dessert		
16	17	18	19	20
CLOSED FOR MARTIN LUTHER KING JR. DAY	7 pm: Beginners Square Dance	12 pm - 2 pm: Classic Country Jam Tater Tot Hotdish, dinner roll Dessert	6 pm: Annual Meeting Open to all	
23	24	25	26	27
8:30 am: Defensive Driving Course 9 am: Happy Feet Footcare Appointments 7 pm: Beginners Square Dance	9:30 am - 12:30 pm: 1:1 Tech Appointments 1 pm: Free Movie <i>Ticket to Paradise</i>	11:30 am: Home Cooking by Chef Greg Meatloaf with potatoes and veggies Dessert		
30	31	1	2	3
7 pm: Beginners Square Dance		If you have questions and a phone number is not listed in the description, call The Gillespie Center Front Desk at 952-472-6501 for assistance.		

Join us for a homemade lunch!

Wednesdays, 11:30 am

Dine in or drive up

Cost: \$7.00



Classic Country Jam & Lunch

Third Wednesday each month

12 pm - 2 pm

Once a month, lunch is served with a side of live music!

Cost: \$7.00



Call the Center to sign up for lunch by Monday each week.

Coffeehouse open!

Monday - Friday

8:30 am - 10 am



Bakery open!

Monday - Friday

8:30 am - 3:30 pm

Saturday

8:30 am - 10:30 am



Technology Support & Coaching

Need help with your smartphone, tablet, laptop or other device? Connect with an experienced digital handyperson, who visits the center each month and can help you:

- Virtually connect via Zoom or Facetime
- Find and use helpful device features
- Manage online security and safety
- Troubleshoot device settings or errors



Call the center to schedule your **free** appointment. Bring your device with you.

A service provided as part of the HOME program and funded, in part, by Hennepin, Sherburne & Wright Counties. There is no fee for this service.



Square Dancing for Beginners

Tuesdays, January 3 & 17

Mondays, January 9, 23, 30

7 pm

Learn a few square dance calls while you walk to music.

Introductory level, partners provided, casual attire. No charge.

Fun, fitness & fellowship! Ages 8-98!

NOW SHOWING

"Ticket to Paradise"

Tuesday, January 24, 1 pm

George Clooney & Julia Roberts team up as exes who find themselves on a shared mission: to stop their lovestruck daughter from making the same mistake they once made.

Comedy-Romance, Rated: PG-13, 2022, 1 hr. 44 min.

FREE



ONGOING WEEKLY ACTIVITIES

Monday	Tuesday	Wednesday	Thursday	Friday
8:30 am: Over 50 & Fit 9 am: Canasta 1 pm: Cribbage	Photo Club 9:45 am: Art Group 1 pm: Needle Talking	8:30 am: Over 50 & Fit 9:30 am: Strength & Cardio 10:30 am: Yoga 1 pm: Bridge	10 am: Men's Shed 1 pm: Corn Hole Bean Bag	8:30 am: Over 50 & Fit 1 pm: 500 Cards



Art Group
Tuesdays
9:45 a.m. – noon
 Lost Lake II

Photo Club

Usually meets Tuesdays

Have fun & learn all about photography.



For more information contact
 Gay Cross at 952-474-4898.

Gillespie Center Photo Club

Gillespie Singers

Check it out! Lots of fun!
 Call Evelin at 952-472-2105
 for more information.



Gillespie Ukulele Group

is currently on a
 winter break and will keep you
 posted on their return date.



Gillespie Book Club

is re-grouping.
 If you are interested in Book
 Club, please contact Mindy at
 952-472-6502.

Needle Talking

Tuesdays, 1:00 p.m.

Do you knit, crochet, needlepoint,
 weave, or create other projects using
 yarn, needles, beads, or ropes?



Come and enjoy time together
 while working on your own projects.

Canasta

Mondays, 9:00 a.m.

Cribbage

Mondays, 1:00 p.m.

Bridge

Wednesdays, 1:00 p.m.

We play Bridge for fun.

Call Jessie Pinney at 952-472-9801.



Corn Hole Bean Bag Toss

Thursdays, 1:00 p.m.

Enjoy an easy and active bean bag
 toss game and meet some new people.

500 Cards

Fridays, 1:00 p.m.

Gillespie Center Men's Shed

Shoulder to Shoulder

Thursdays, 10:00 a.m.

Get out of the house and come spend
 time with the guys.

Call Phil Johnson at 952-239-0965
 for more information.

ONGOING WEEKLY ACTIVITIES

Monday	Tuesday	Wednesday	Thursday	Friday
8:30 am: Over 50 & Fit 9 am: Canasta 1 pm: Cribbage	Photo Club 9:45 am: Art Group 1 pm: Needle Talking	8:30 am: Over 50 & Fit 9:30 am: Strength & Cardio 10:30 am: Yoga 1 pm: Bridge	10 am: Men's Shed 1 pm: Corn Hole Bean Bag	8:30 am: Over 50 & Fit 1 pm: 500 Cards

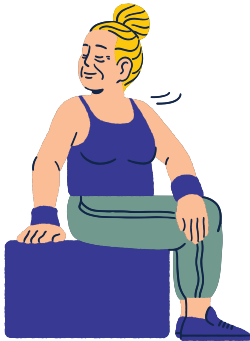
Over 50 & Fit

Monday, Wednesday, and Friday

8:30 am

Wake up & stretch!
 Low impact exercise and stretching
 to a variety of music.

Cost: \$6 for a lifetime membership.



Strength & Cardio

Wednesdays, 9:30 am

The class is focused on helping
 you get and stay strong, preparing
 the body for everyday activities.

By combining strength and
 cardio in this non-competitive
 class, you will improve bone and
 muscle strength, balance, flexibility,
 plus heart and brain health.

See instructor about class fees.

Instructor: Victoria Fraser



Gentle Yoga Class

Wednesdays, 10:30 a.m.

Relax and stretch to improve the
 quality of your everyday life.

This class will be adapted to the
 participants and will include

Light Yoga Fit.

Bring your yoga mat.


See instructor about class fees.

Instructor: Victoria Fraser



Ad hoc content

- Event photos
- Volunteers needed
- Game, puzzle, "fun facts"
- Special event notices or announcements
- Holiday and/or recognition month "fun facts"



Martin Luther King Jr.

Alabama

Assassination

Brotherhood

Change

Civil rights

Dream

Equality

Freedom

Georgia

Integration

January

Justice

Minister

Nobel

Nonviolence

Peace

Rosa Parks

Segregation

Speech

G	O	S	N	L	S	F	Z	U	S	F	S	Z				
R	K	S	X	M	B	A	A	K	R	E	Q					
A	F	Y	E	C	A	G	W	L	R	T	G	Q				
C	R	O	E	G	D	X	Z	A	K	R	R					
	T	A	G	G	S	N	F	E	X	D	P	A	E	N		
J	G	I	N	T	E	G	R	A	T	I	O	N	A	T	G	O
A	E	R	Z	Z	J	U	S	T	I	C	E	Q	S	B	A	I
N	B	L	S	A	Q	C	H	A	N	G	E	I	O	R	T	T
U	B	I	J	F	P	S	F	Q	E	X	N	V	R	O	I	A
A	Y	V	I	S	E	S	V	U	B	I	Y	O	S	T	O	N
R	T	I	J	A	R	N	B	L	M	I	H	P	V	H	N	I
Y	K	C	A	N	O	N	V	I	O	L	E	N	C	E	Y	S
M	O	D	E	E	R	F	P	A	Y	E	E	R	Q	R	X	S
I	Y	T	I	L	A	U	Q	E	C	B	C	B	Z	H	J	A
W	X	U	P	W	Z	T	C	H	D	Q	A	G	E	O	H	S
M	A	E	R	D	A	A	R	H	A	V	E	N	P	O	P	S
U	O	D	H	Y	Z	Y	Y	X	C	G	P	D	B	D	S	A

EXAMPLE

© 2014 puzzles-to-print.com

The Gillespie Center, 2590 Commerce Boulevard, Mound, MN 55364 | www.gillespiecenter.org
952-472-6501 | info@gillespiecenter.org

A nonprofit organization with a mission to innovate and deliver services



that meet the changing needs of older adults and their caregivers.



The **HOME program** offers Technology Access, Support & Coaching services, handyman services, home safety checks, housekeeping and lawn care/snow removal.

hometeam@seniorcommunity.org
763-416-7969



Licensed social worker **Sara Roberts, LSW** offers **Senior Outreach & Caregiver Services** helping older adults and

their families access appropriate and affordable services based on their needs. Contact Sara for an appointment:

s.roberts@seniorcommunity.org
612-868-6720



CareNextion.org is a free, online tool and app that helps caregivers coordinate and connect with others to support their older adult loved one.

www.seniorcommunity.org
ReimagineAging@seniorcommunity.org
952-541-1019

Last updated 01/2023

AARP Tax-Aide Preparation Service

On January 9, The Gillespie Center will start taking appointments for the upcoming tax season, February 10 - April 7, 2023.

On site preparation for all simple returns is available this tax season.

Cost: XXXX

Call the Gillespie Center Front Desk to make an appointment.

952-472-6501

WALK-IN TAX PREPARATION
WILL NOT BE AVAILABLE.

AARP Defensive Driving Refresher Course

Monday, January 23, 2023

8:30 a.m. - 12:30 p.m.

Cost: XXXX Registration required.
Call 1-888-234-1294 to register.



4th Monday each month

Appointments available

between 9 a.m. and 3 p.m.

Cost: \$45 cash, check or credit
Call 763-560-5136 to schedule.



Health Insurance Counseling

Scheduling in-person appointments now.

Call Mindy at **952-472-6502** and leave your name and phone number.



Come in out of the cold and warm up by the Gillespie fireplace!.



Save the dates!

**Gillespie Family Fun Bingo
with prizes!**

Sunday, February 5
1 pm - 3 pm

Defensive Driving Refresher Course

Monday, February 13
8:30 am - 12:30 pm

Holiday Turkey Dinner & Music

Wednesday, February 15
12 pm

**Memorial Blood Centers
Blood Drive**

Thursday, February 23

Presentation by

Huber Funeral Home

Thursday, February 28
10:00 am



A big thank you to Peggy Warner for playing Christmas carols and leading us in the "Name That Tune" game.



Technology Partners Program

If you are age 60+ without home internet or a current device, we can help you:

- Find and sign up for affordable internet service
- Get a device connected and adjust security settings
- Learn how to use the device and its features and search the internet

To apply, call 763-416-7969 or email hometeam@seniorcommunity.org.



Thanks to a grant from the State of Minnesota Department of Human Services, there is no cost for this program. Low-income participants may be eligible for a free device.

In Memoriam, January 2023

Terry Breen
Donna Lindstrom

Thank you donors!

The staff and board are deeply grateful to the following supporters who donated to The Gillespie Center last month.

Donations

Cindy Esplein
Angella Hames
Colleen Hendricks
Judy McKeand
Delores Strand

500 Cards Group
The Thaler Family Foundation
Wednesday Bridge Group

In Memory of Loved Ones

Marion Beise from Mary Wenberg
Butch Blakstvedt from Gretchen Ehalt
Steve Clark from Jerry & Diana Kohls
Gretchen Menzel from Phyllis Jessen
Keith Putt from Jerry & Diana Kohls

Terry Breen
Donna Lindstrom
Dwayne & Catherine Platzer
Valerie Sandler

Honor & Gifts

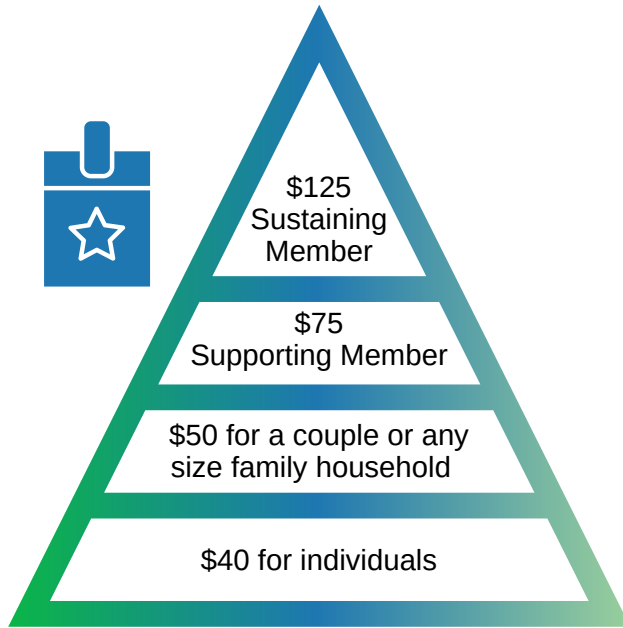
In honor of the Gillespie Singers from
Lake Minnetonka Shores, Presbyterian Homes

Make your donation even more special. Make a gift in honor or memory of a friend, family member or other loved one or celebrate a birthday, anniversary or other special event.

The Gillespie Center Endowment Fund

The **Gillespie Center Endowment Fund** was established to maintain consistent financial support now and in the future. The principal from this Endowment Fund will continue to grow, in perpetuity, to help fund Gillespie Center programs and services for many years to come. The interest earned each year is used to fund current program and service needs.

Making a gift to the fund provides assurance that your wishes are respected and your gift(s) can have a permanent, positive impact on the wellbeing of current and future older adults. Gifts to this fund may be current, pledged, or planned gifts including cash, real estate, stocks, memorials, trusts, and insurance benefits.



Annual Membership

Annual memberships* at The Gillespie Center help support day to day operations.

Call the Center to become a member or renew your membership.

Business sponsorships also available.

Check the mailing label on your newsletter to find the expiration date for your membership.

Gillespie Scrip Gift Cards



When you shop with a Gillespie scrip gift card, retailers donate a percentage of your purchase to the Gillespie Center. Gift cards are available for any occasion and in various amounts, starting at \$10.

Place your order at the Front Desk and your cards arrive a few days later.

Rent The Gillespie Center

The Gillespie Center is the perfect location for gatherings of many kinds...

- Birthday, anniversary, graduation, and holiday parties
- Baby and bridal showers
- Weddings
- Family or class reunions
- Business meetings
- Fundraisers
- Banquets and more



Visit gillespiecenter.org to watch a video, see photos of available spaces, review the catering menu and find rental rates.

To check availability and learn more, contact Greg at 952-472-7563.

**Gillespie Center members receive a 10% discount on room rental charges.*

SWEEPSTAKES WINNERS 2022-23

Week #1
Scott Wakefield

Week #2
Jodi Ingle

Week #3
Denise Pietag

Week #4
Mike Tersteg

Week #5
Larry Gallagher, M.D.

Week #6
Joyce Matheson



2590 Commerce Boulevard
Mound, MN 55364

Non-Profit Org
US Postage
PAID
Permit #110
Mound, MN



The Gillespie Gazette is published monthly by The Gillespie Center.

**The Gillespie Center
Board of Directors**

President: Karen DeLorenzo

Vice President:

Secretary: Linda Blakstvedt

Past President: Susan Navratil

Wendy Gasca

Joy Grundeen

Vickie Innes

Ann Macgregor

Pastor Mike Michalk

Cindy Palm

Catherine Pasche

Ex-Officio:

Mindy Anderson

Deb Taylor



www.gillespiecenter.org



952-472-6501



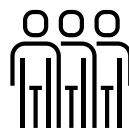
info@gillespiecenter.org



Monday - Friday

8:00 a.m. - 4:00 p.m.

Additional hours for special events



Center Director:

Mindy Anderson, 952-472-6502

Senior Outreach Services:

Sara Roberts, LSW, 612-868-6720

Event Rentals:

Greg Sletten, 952-472-7563



SENIOR COMMUNITY
SERVICES

The Gillespie Center has a contract with Senior Community Services to provide daily center operations management, programming, and activities for older adults.